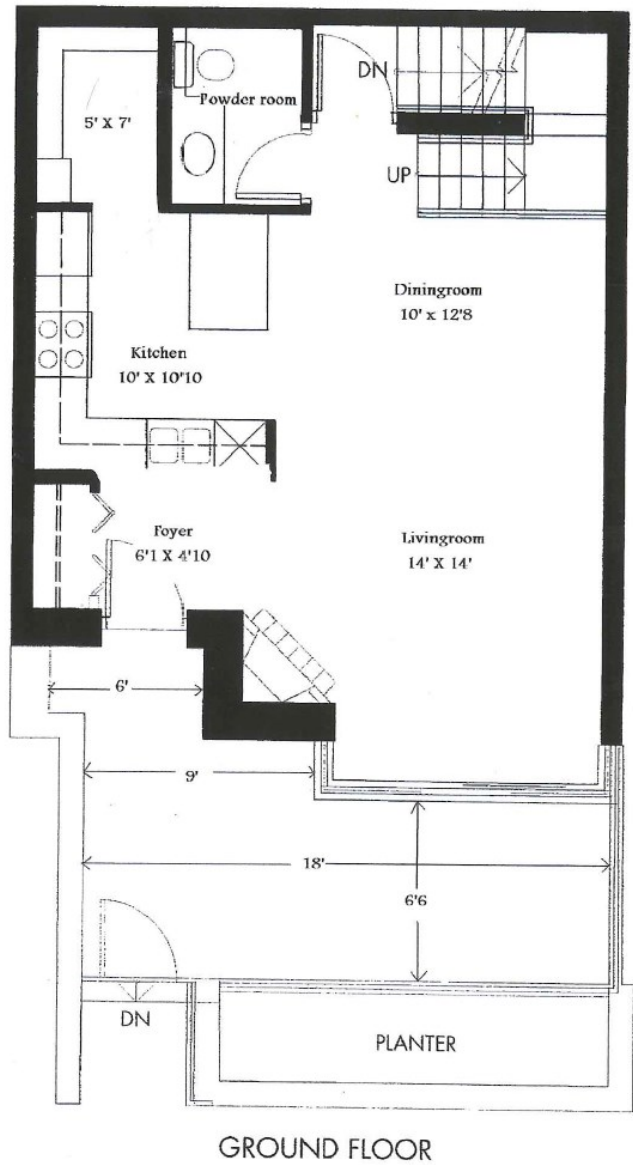
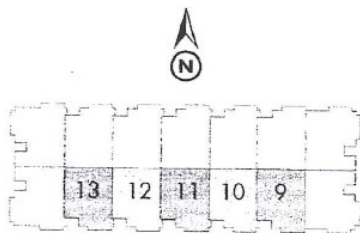
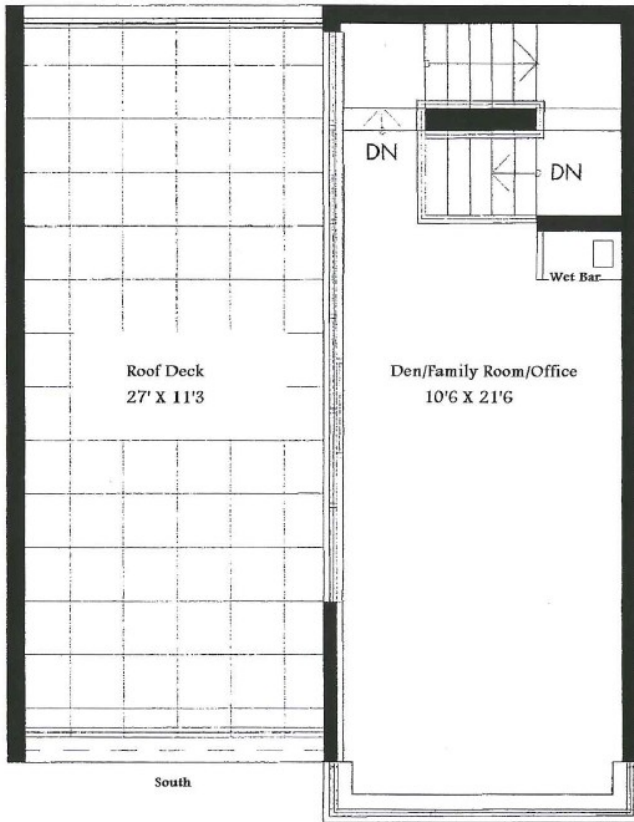


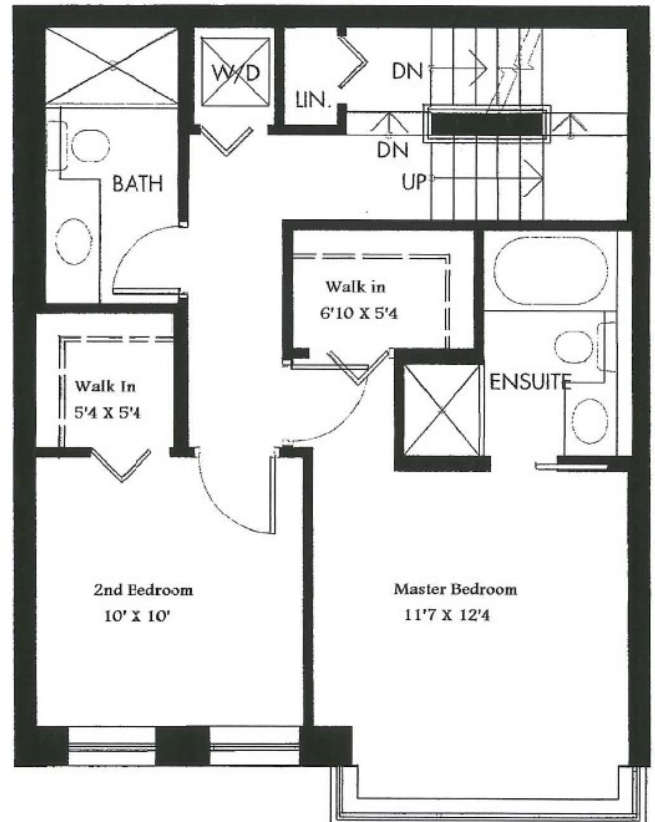
Siena of Portico
 1405 West 7th Ave
 South Facing, Concrete, 2 Bedroom and Den with attached 2 Car Garage
 2040 square feet, including garage
 Approx. 150sqft patio and 320 sqft Roof top Deck with view



North, into the landscaped Gardens and
Views to the City and Mountains



THIRD FLOOR



SECOND FLOOR

